

AMHSSC/CORP/COE/2025/10

Date: 6th October 2025

Request for Proposal (RFP)

For Creation of Luxury Showroom at AMHSSC Mumbai Centre of Excellence (CoE)

RFP Issue Date: 6th October 2025

Submission Deadline: 13th October 2025

Project Duration: 1 month from the issue of Work Order (hand over of site before 15th November 2025)

1. Background

Apparel, Made-Ups & Home Furnishing Sector Skill Council (AMHSSC), a Section 8 company under the Ministry of Skill Development & Entrepreneurship, Government of India, has established a state-of-the-art Centre of Excellence (CoE) in Kandivali, Mumbai. The CoE serves as a hub for advanced skill training in the fashion and lifestyle sector. To complement the Luxury Fashion & Lifestyle Management Course, AMHSSC intends to create a Luxury Showroom that reflects premium aesthetics and global retail standards.

2. Objective

To design, fabricate and execute a Luxury Fashion Showroom showcasing premium retail aesthetics, incorporating high-end materials, lighting and finishes **as per the approved concept and Bill of Quantity (BoQ).**

3. Scope of Work

- Civil & Interior Work – Flooring, wall finishes, ceiling and partition works.
- Furniture & Fixtures – Display tables, racks, mirrors, mannequins and seating.
- Electrical & Lighting – magnetic linear spotlights and electrical setup.
- Branding & Signage – In-store branding, logo panels and wall-mounted name boards.
- Miscellaneous – Delivery, installation, finishing and site clearance.
- Quality & Safety Compliance – All materials must conform to industry safety and quality standards.

Refer the design layout and 3D visualization for details.

4. Deliverables

- Detailed Design Layout & 3D Visualization for approval before execution.
- Completed showroom setup as per approved BoQ and design.
- Documentation – Material specification sheet, warranty details and completion report.
- Timeline adherence – Work completion within agreed project schedule.

5. Bid Submission Requirements

- Company Profile and relevant experience (especially in luxury retail interiors).
- Detailed financial quotation aligned with the **attached BoQ**.
- Project execution timeline and work plan.
- GST registration, PAN and other certifications, if any

6. Evaluation Criteria

Proposals will be evaluated on the cost effectiveness, timely delivery and past experience/s of the bidders.

7. Payment Terms

- 30% – Advance upon work order issuance.
- 40% – Upon completion of 60% of work (site verification).
- 30% – After final completion and handover.

8. Contact Details

Sealed quotations to be sent to on / before 13th October 2025:

Atul Madan

Apparel, Made-Ups & Home Furnishing Sector Skill Council (AMHSSC)

Flat No. A-312 to A-323, 3rd Floor, Somdatt Chamber-1,

Bhikaji Cama Place, Africa Avenue, New Delhi-110066

Annexure – A: Bill of Quantities (BoQ Summary)

Sr. No.	Description of Item	Size (approx.)	Unit	Qty	Remarks / Category
1	Wooden Display Storage with Blue Royal Matte Finish	13'0" x 1'3" x 6'0"	Nos	1	Furniture & Fixture
2	MS Metal Frame with Golden PVD Coating Finish	4'0" x 1'3" x 6'0"	Nos	3	Display Rack
3	Chest Cabinet with High Gloss Laminate	5'0" x 2'0" x 3'0"	Nos	3	Storage
4	Standing Wooden Finish Unit with High Gloss Laminate	16'0" x 1'3" x 6'0"	Nos	1	Partition
5	Low Height Cabinet with High Gloss Laminate	4'0" x 1'3" x 6'0"	Nos	1	Furniture
6	Low Height Jewelry Display Case	4'0" x 1'4" x 3'0"	Nos	2	Display
7	Clothing Display Rack	5'0" x 2'0" x 6'0"	Nos	2	Fixture
8	Reception Desk with High Gloss Marble & Golden Finish	6'0" x 2'0" x 3'6"	Nos	1	Reception Counter

Detailed costing, specifications, finishes and GST components are provided in the attached Excel BoQ.



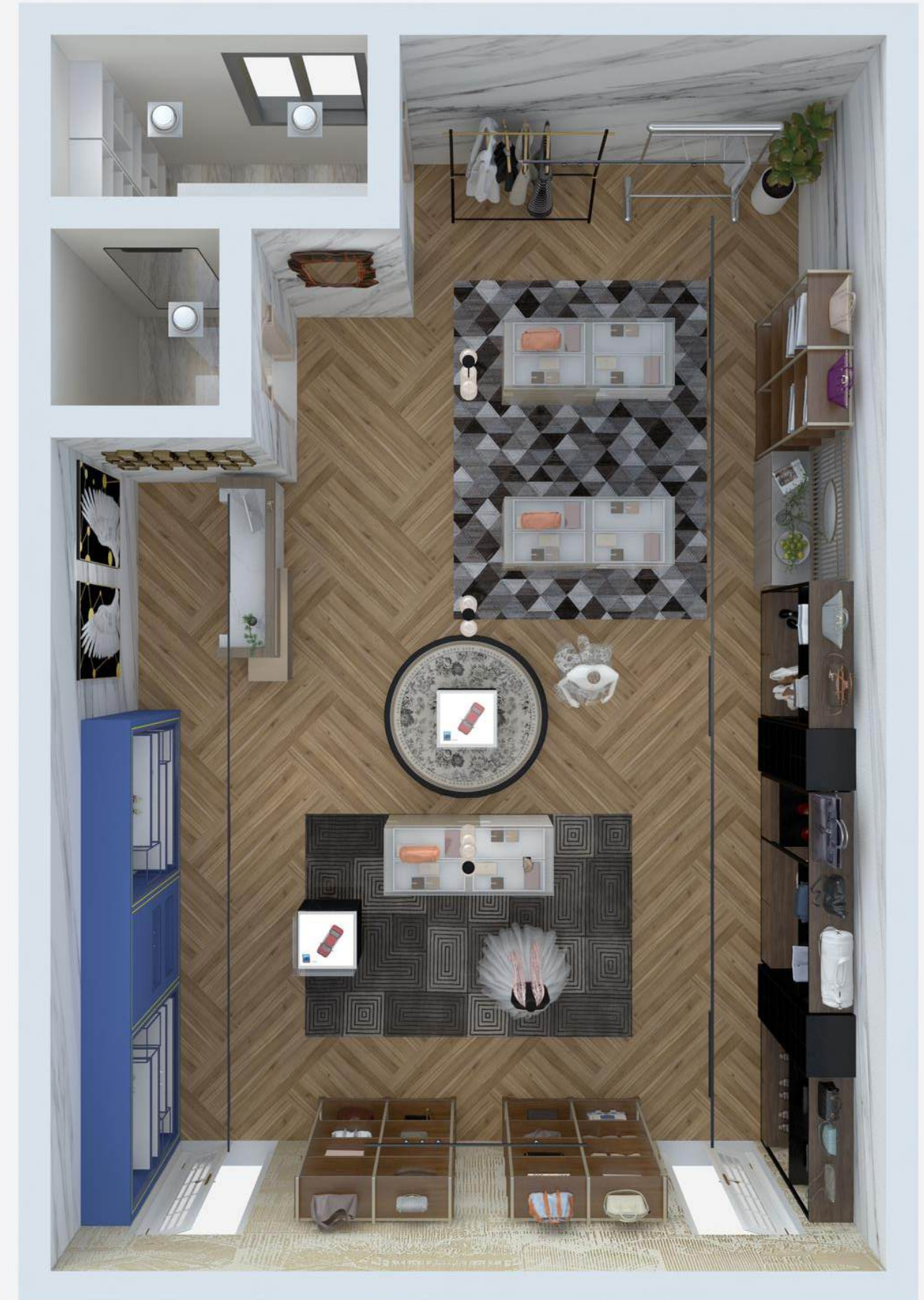
Luxury Showroom PROJECT

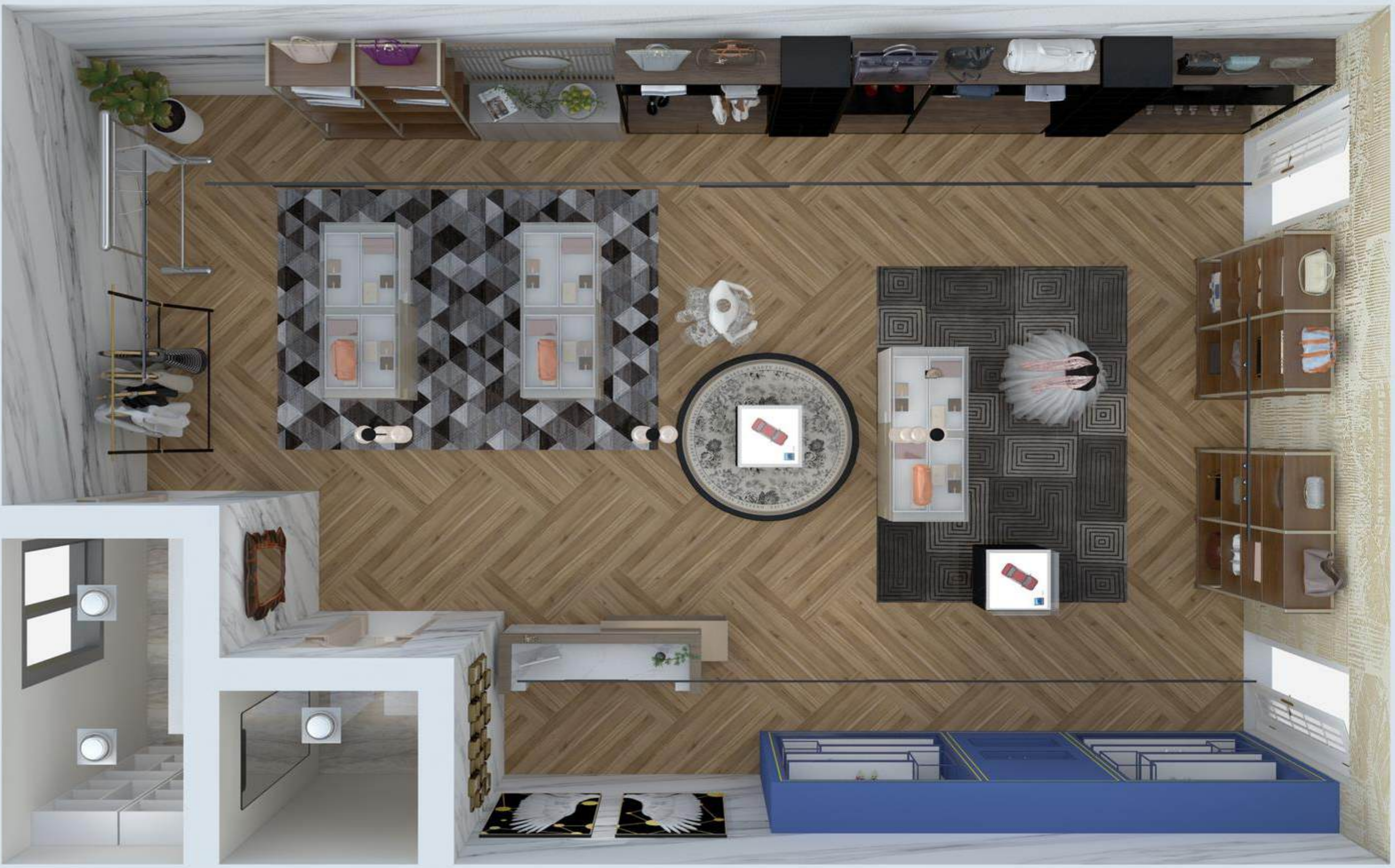
PLAN PROPOSAL

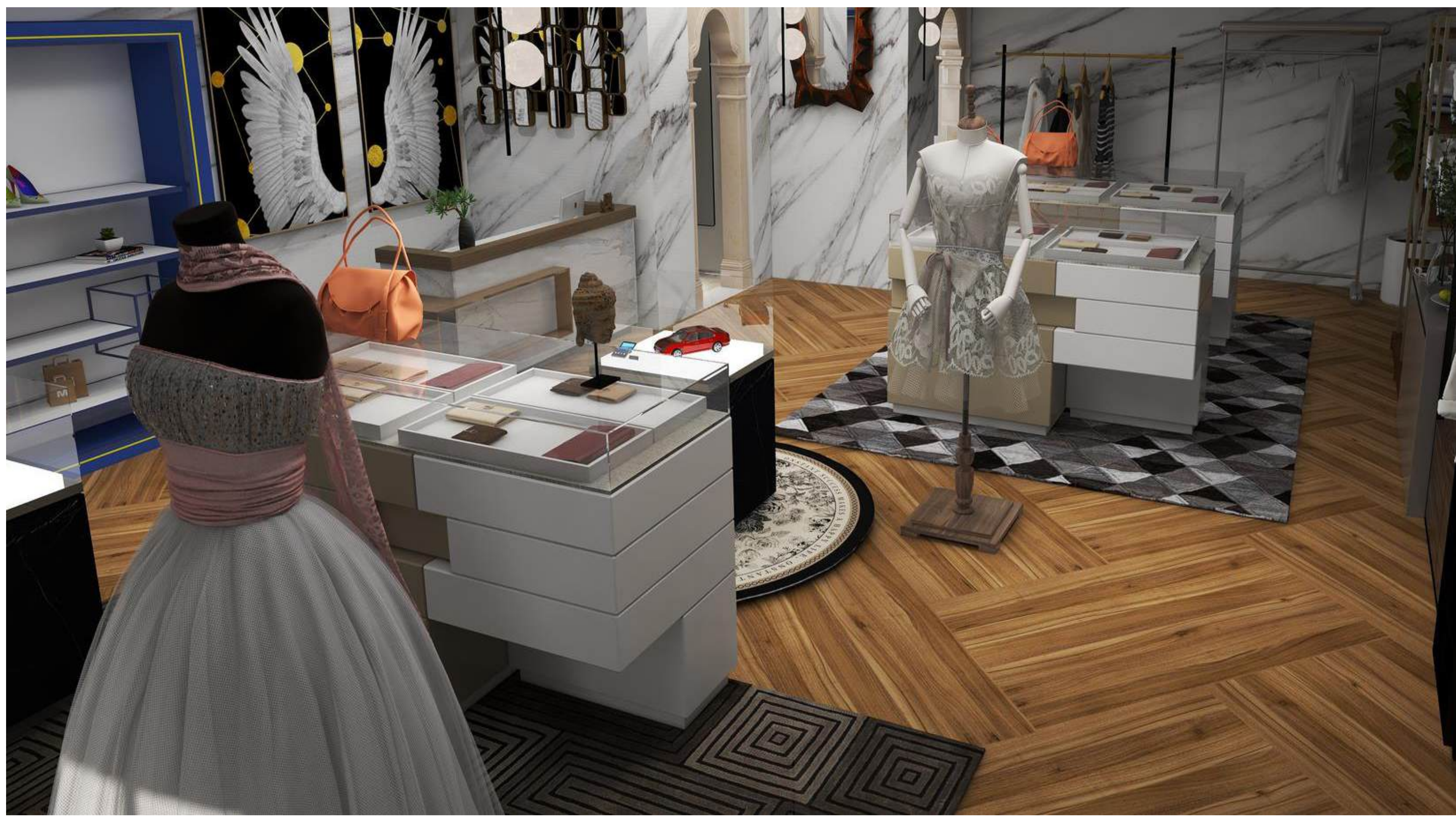
Luxury Showroom: 570 Sqft

Store Room: 32 Sqft

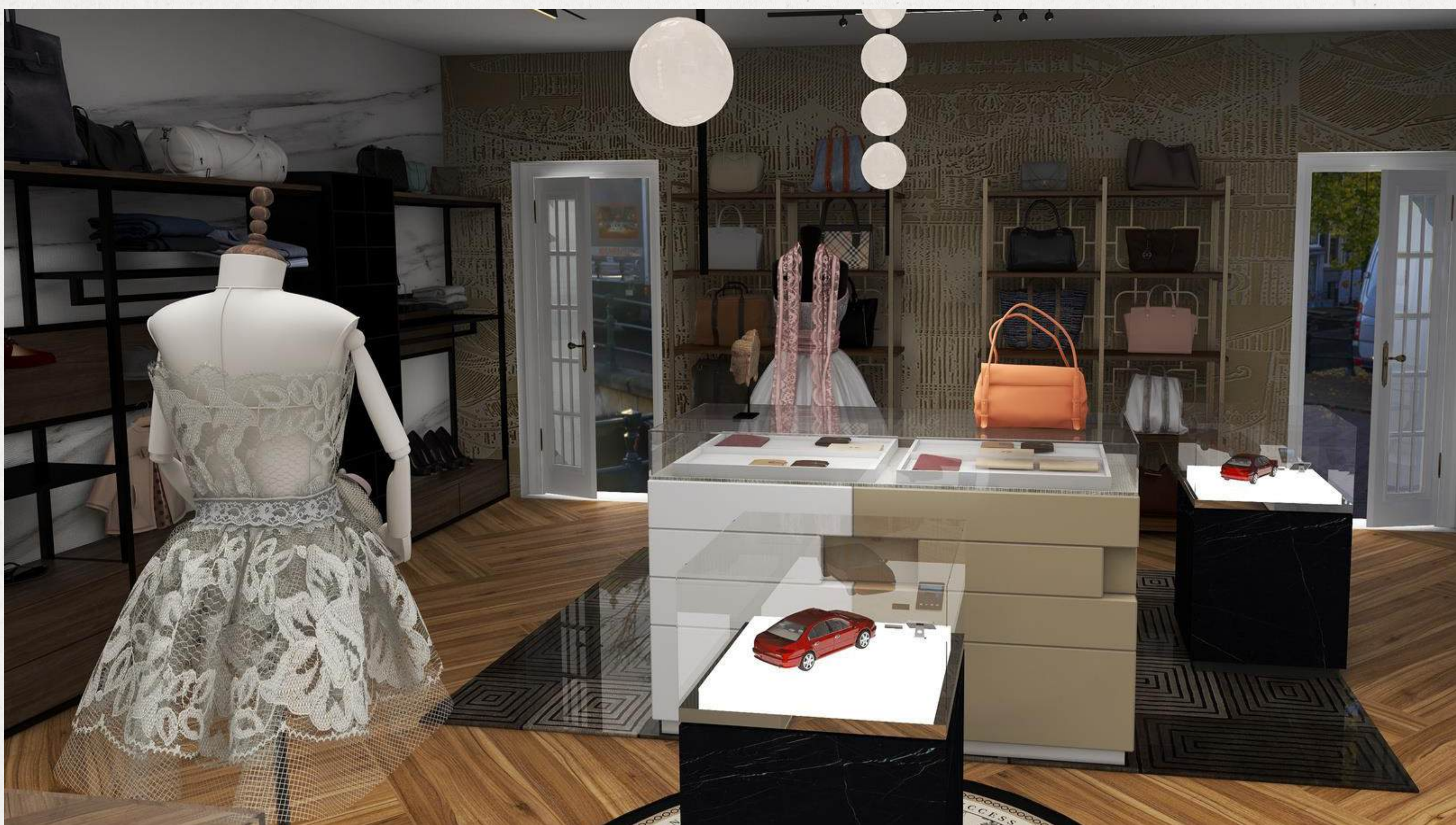
Changing Room: 18 Sqft















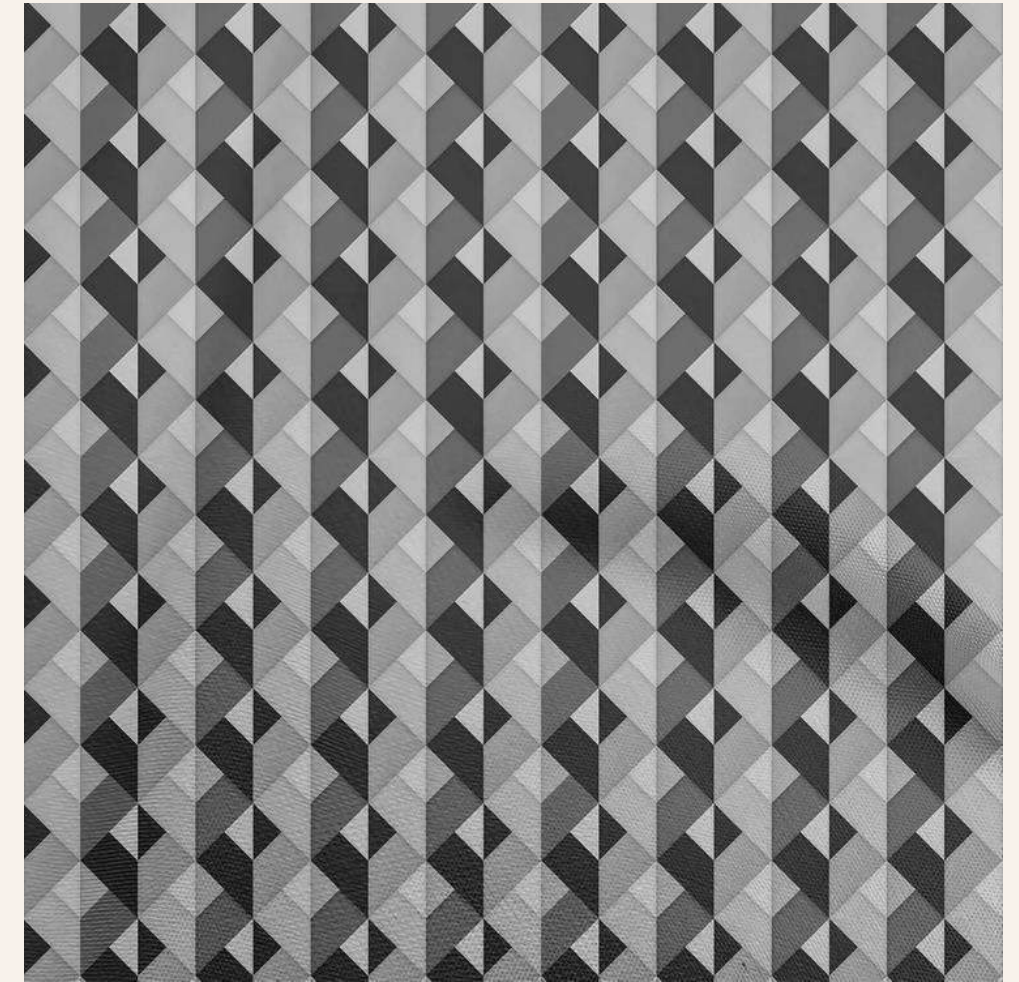
FLOORING



Light wood matte herringbone
paving



Geometric Wool Hand
Tufted Carpet



Silk Tabby Gray Fabric
Geometric

WALL FINISHES



Marble Laminate



Gold Effect Wallpaper

LIGHTING

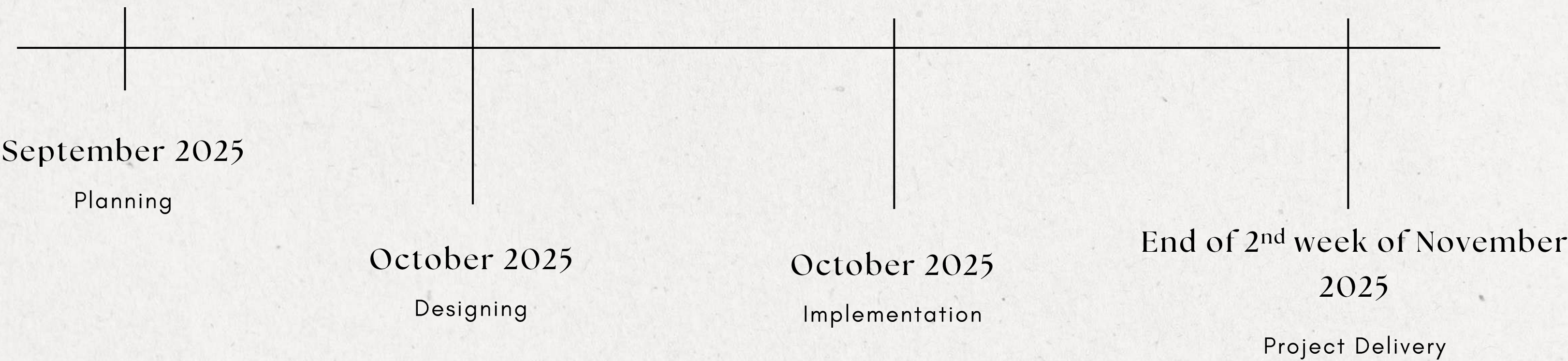


Ceiling Chandelier







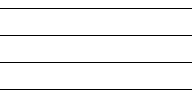


Magnetic Linear Spotlight

TIMELINE



ANNEXURE -A BOQ

K	FURNITURE & FIXTURE	Ref Image	Size	Unit	Qty	Rate	GST	Amount
1	R1 - Wooden Display Storage with Blue Royal Matte Finish and MS Rod along with glass for compartment, 6 showcasing display		13'0" x1'3"x6'0"	Nos	1			
2	R2 - MS Metal Frame Golden PVD coating Finish Display Rack with 8 Compartment in Elm veneer/rubber wood solid		4'0"x1'3"x6'0"	Nos	3			
3	R3 - Chest Cabinet with high gloss laminate with Glass Display		5'0"x2'0"x3'0"	Nos.	3			
4	R-4 Standing Wooden Finish and High gloss laminate, Multi Cabin Display Rack with pullable cabinet. Full Height Matte black finish cabinets with Movable Wheels.		16'0"x1'3"x6'0"	Nos.	1			
5	C-1 Low height Cabinet with high gloss laminate, glass top and Bamboo Screen with Mirror		4'0"x1'3"x6'0"	Nos.	1			
6	C-1 Low Height Jewelry Display Case with high gloss black laminate finish and glass top		4'0"x1'4"x3'0"	Nos	2			
7	Clothing Display Rack		5'0"x2'0"x6'0"	Nos	2			
8	RD-1 Reception Desk With High Gloss Marble and Wood Finish With a Small Display Cabinet, Desk Top finish with High gloss Wood Finish laminate		6'0"x2'0"x3'6"	Nos	1			
9	S-1 Vertical Stand Storage Cabinet with high gloss white laminate		2'0"x1'0"x7'0"	Nos	5			
10	P & F of Power/Light Point switch Socket,DB, Lighting Track & concealed Lighting arrangement, Fire, Smoke etc complete. (As per Approved Design)			sqft	650			
11	Construction Trial Room with Stone finish Door Frame and Curtain			Nos	1			
12	Constuction of Store Room with Stone finish Door Frame and Curtain			Nos	1			
13	P & F of Gypsum Board False Ceiling as per design			sqft	650			
14	P & F of Wooden Flooring with skirting, Basic cost of Wooden Flooring @250/- per sqft			sqft	650			
15	Supply & Fixing of Rugs 1 Wool and Vicosse Material	 	7'0"x4'0"	Nos	1			
16	Supply & Fixing of Rugs 2 Hand Tufted Rug		7'0"x4'0"	Nos	1			
17	Supply & Fixing of Round Carpet/Rugs		4' dia	Nos	1			
18	P & F of Laminated Flush door/with Door Frame including hardware, Finish duco Paint.	Dorset/Ozone	Nos.	Nos	2			
19	P & A of two coat of wall puttli over the walls	Birla or eqsl.		Sqft	2500			
20	P & A of three coat of Premium Quality Plastic Paint with Primer, finish with roller. Royal Finish	Asian/ BURGER or eqsl.		Sqft	650			
21	P & A of Marble Finish Paint over the wall Onyx Marble's luxurious texture.	(Birla Opus Onyx Marble) or eqsl.		Sqft	1800			
22	P & F of Luxurious serie Wall Paper basic cost @20000/- per Roll			Roll	2			
23	Logo Branding & Signages			Lot	1			
24	P & fixing of 2.0 tr Cassatte Air- Conditioner including all Copper Piping, stand, drain pipe complete etc.			Nos	2			
	TOTAL FURNITURE WORK						-	